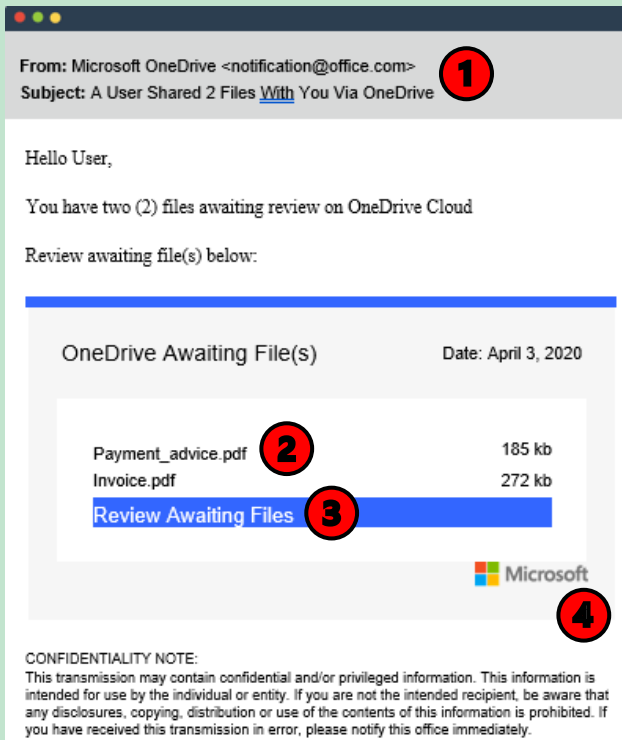


## Microsoft Phishing Scams

How do you know if an email is suspicious?  
Check out these real phishing emails to learn the warning signs.

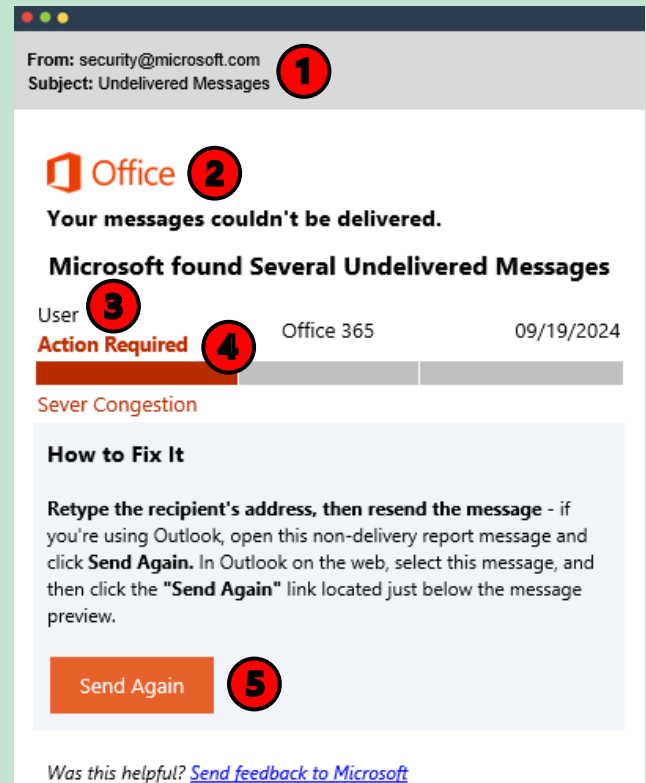
### Microsoft Email Clues

1. Do you recognize this sender?
2. Were you expecting to receive this file?
3. Do you know where this link leads?
4. Impersonates Microsoft to establish legitimacy.



### Microsoft Email Clues

1. Do you recognize this sender?
2. Impersonates Microsoft to establish legitimacy.
3. Personalized to grab your attention.
4. Appeals to urgency.
5. Do you know where this link leads?



**Remember, you are the last line of defense against phishing.  
IF YOU RECEIVE A SUSPICIOUS EMAIL, REPORT IT IMMEDIATELY.**

