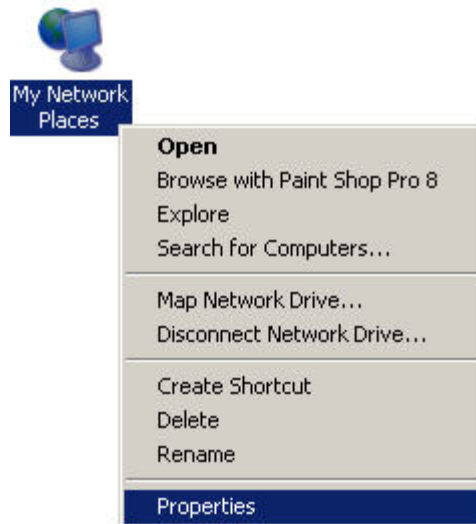


## WEP Wireless Configuration

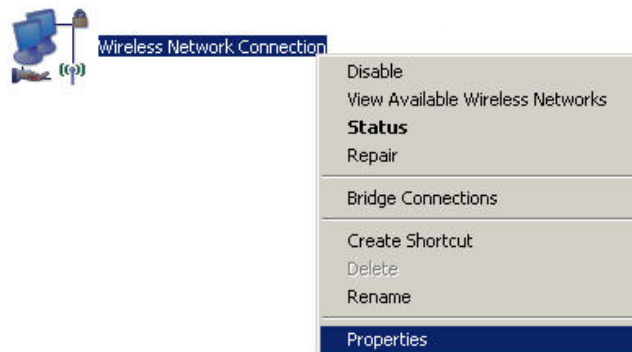
**NOTE: These instructions will be using the Windows Client Manager to set up the WEP wireless connection.**

1. Right-click on the *My Network Places* icon
2. Select *Properties* from the menu (see *Figure 1*)



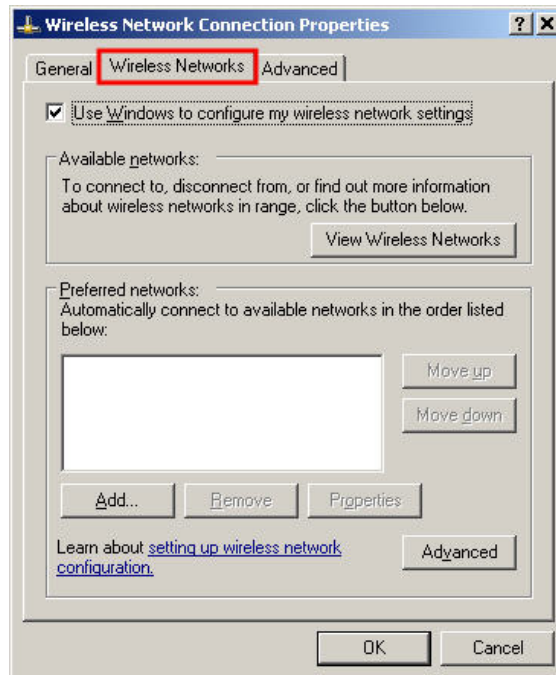
*Figure 1*

3. Right-click on the *Wireless Network Connection* icon
4. Select *Properties* from the menu (see *Figure 2*)



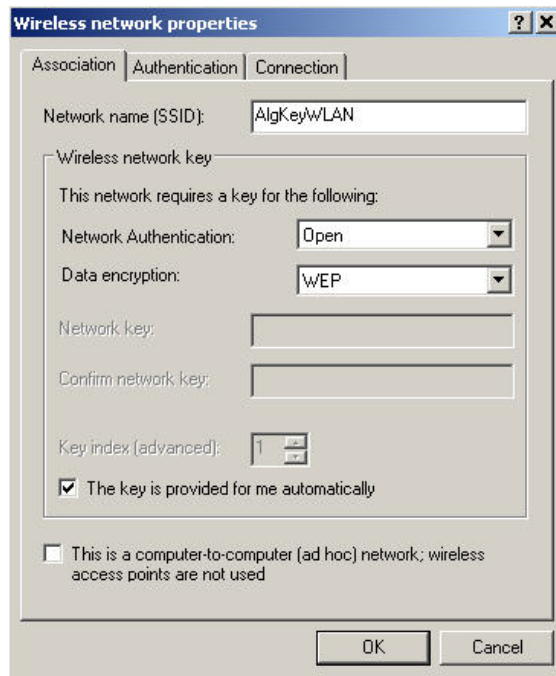
*Figure 2*

5. In the **Wireless Network Connection Properties** window, click on the **Wireless Networks** tab (see *Figure 3*)



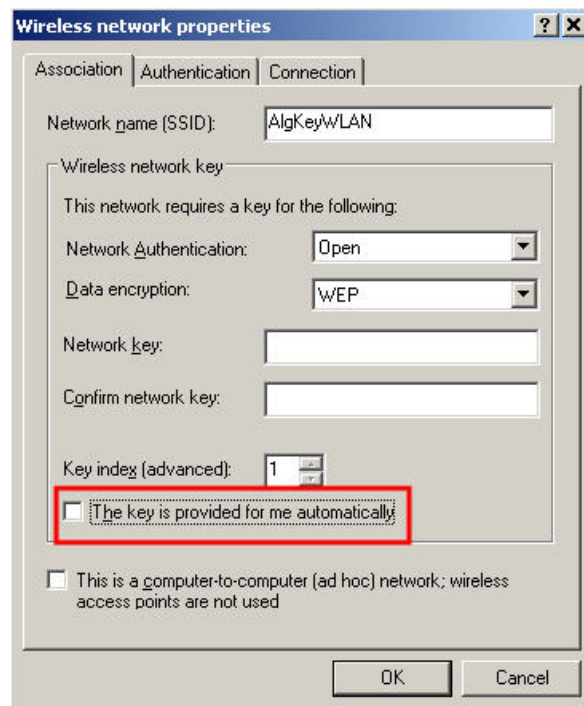
*Figure 3*

6. Click on the **Add...** button
7. In the **Wireless network properties** window, type in **AlgKeyWLAN** in the **Network name (SSID)** box (**NOTE: This field is CASE SENSATIVE and you need to type it exactly as shown in *Figure 4***)



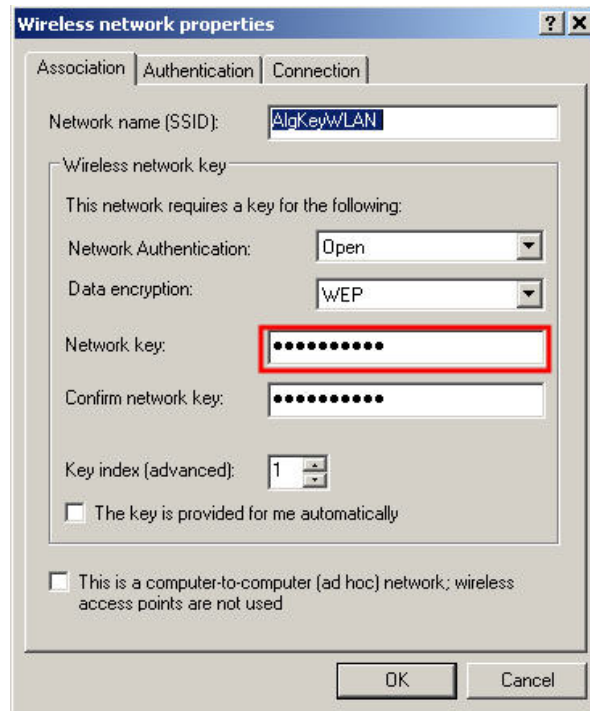
*Figure 4*

8. Make sure that **Network Authentication** is *Open*
9. Make sure that the **Data encryption** is *WEP*
10. Remove the checkmark beside **The key is provided for me automatically** (see Figure 5)



*Figure 5*

11. In the **Network Key:** box, type in **802114afee** (see *Figure 6*)



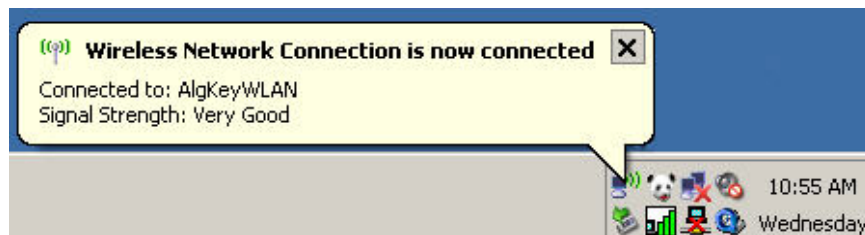
*Figure 6*

12. Type in **802114afee** again in the **Confirm network key** box

13. Click **OK**

14. Your wireless card will now attempt to connect to the College network

15. After a few moments, you should see a message appear on the bottom, right-hand side of your screen near the clock (see *Figure 7*)



*Figure 7*

## Logging onto Wireless Server

After you have a successful connection, you will be required to log on using your College username and password to do this:

1. Launch Internet Explorer
2. You will be re-directed to a page the resembles *Figure 8*



### *Algonquin College Network Access*

A screenshot of a web browser window showing a login page. The page has a white background with a grey border. At the top, it says "User Agreement" followed by two paragraphs of text. Below the text, there are two input fields: "Username:" and "Password:". To the right of the "Password:" field is a button labeled "Login >>". The text in the browser window is as follows:

User Agreement  
The Acceptable Use Policy specifies the College's policy regarding user responsibilities, general computing, privacy, and provision of information including Access Centres.

Student Technology Fee Agreement between Algonquin College and the Students' Association.

User Agreement In consideration of the issuance to me of an Algonquin Internet

Username:

Password:

*By logging into this site you are agreeing to the above internet access usage policy.*

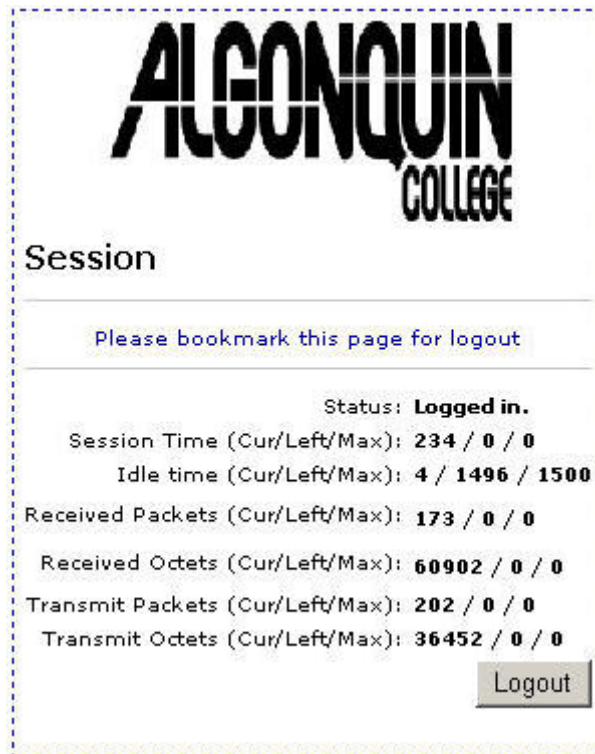
*Figure 8*

3. Type in your College username and password
4. Click on the *Login*>> button
5. Once you have successfully logged in, you will be redirected to your original homepage and you are able to browse the Internet

## Logging off the Wireless Server

Once you are finished browsing the Internet, you will need to log off the wireless server. To do this:

1. In the address bar, type in the following:  
<http://wireless.algonquincollege.com:8080/session.asp>
2. You will be taken to the logout page (*see Figure 9*)



*Figure 9*

3. Click on the *Logout* button and follow the instructions

**NOTE: You may have the logout screen come up in a separate window when you login, you can leave this open while you are browsing the Internet. Click on *Logout* to log off the wireless server.**