

Mapping to your N: Drive

NOTE: You MUST have a successful network connection to the College before attempting these instructions

1. Right-click on the *My Computer* icon and select *Properties* from the menu (*see Figure 1*)

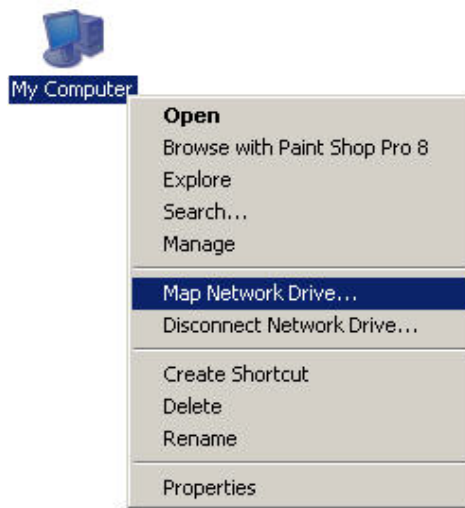


Figure 1

2. The **Map Network Drive** window will open (*see Figure 2*)

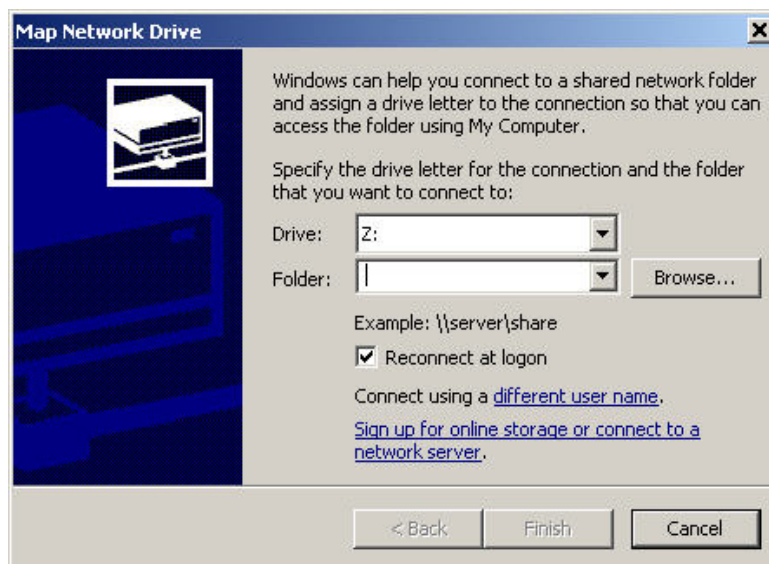


Figure 2

3. Select **N:** in the **Drive:** box (see *Figure 3*) – **NOTE:** if N: is being used, you can choose another letter

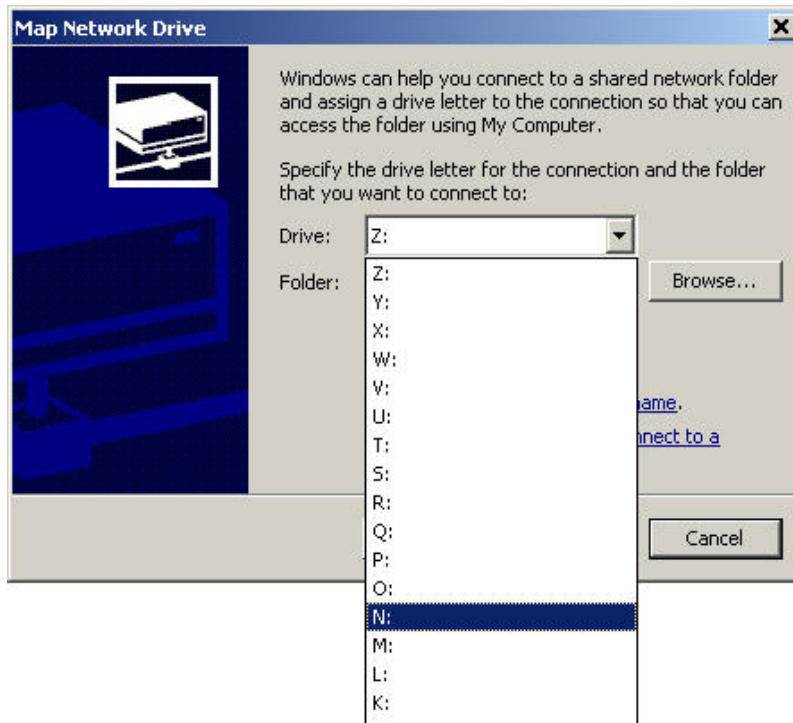


Figure 3

4. In the **Folder:** box, type in the following: `\\algshare\home` and make sure there is a checkmark beside **Reconnect at logon** (see *Figure 4*)

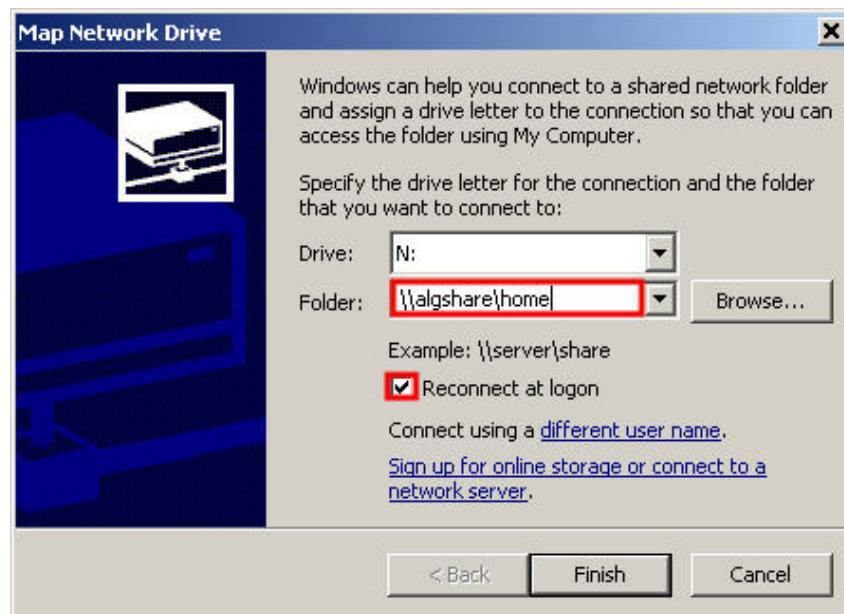


Figure 4

5. Click on the *different user name* link (see *Figure 5*)

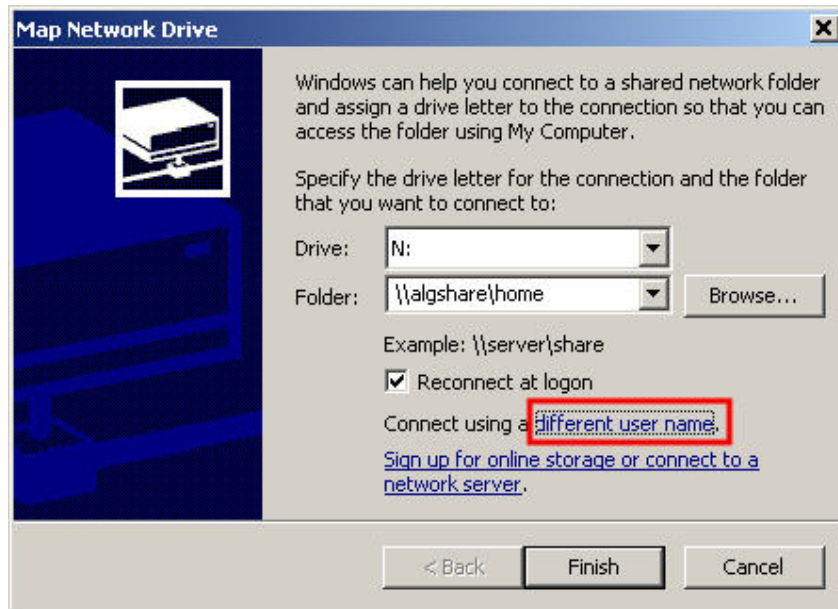


Figure 5

6. In the **Connect As...** window, type in the following (see *Figure 6*)

User name: **woodroffe\user0000** (where user is your NT username)

Password: **your NT password**

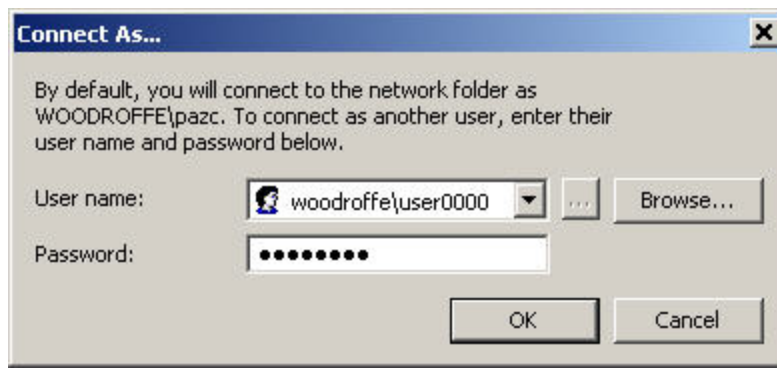


Figure 6

7. Click on **OK**
8. Click on **Finish**
9. Your N: Drive should be mapped and you can access your N: drive by double-clicking on the *My Computer icon* and double-clicking on the icon that resembles *Figure 7*

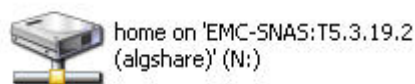


Figure 7